

SYSTEXX ACTIVE RENO - GLASS FIBER WALL COVERINGS FOR RAPID RENOVATION

RENOVATE WITH STYLE

SYSTEXX 
by Vitrulan

INNOVATIVE GLASS FABRIC FOR WALLS AND CEILINGS

RENOVATED IN NEXT TO NO TIME



WHEN YOU NEED A FLAWLESS FINISH FAST

RENOVATING WALLS IN RECORD TIME

→ **SYSTEXX Active Reno** is a glass fabric with a special woven pattern that conceals uneven substrates. Its intentionally irregular, textured finish is particularly suitable for direct application over old wall coverings on areas in need of renovation, e.g. textured plaster up to 2 mm or old glass fabric.

SYSTEXX Active Reno products were developed specifically for quick renovation in many indoor areas – allowing you to continue with your day-to-day business while renovations are underway.

The irregular woven pattern conceals surface unevenness in the substrate.

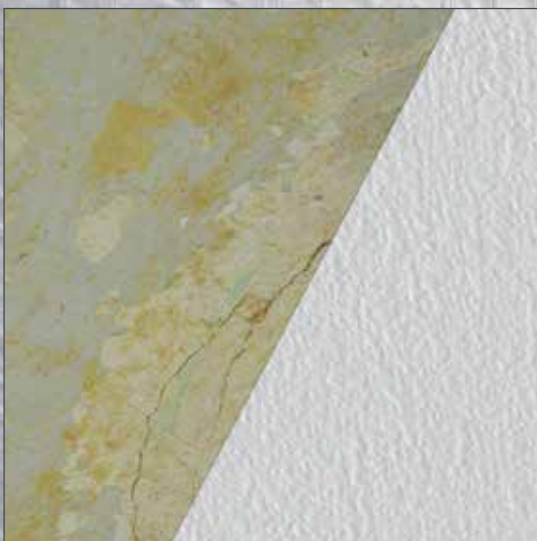


THE IDEAL SOLUTION FOR A WIDE RANGE OF SUBSTRATES

THE ALL-ROUNDER

SYSTEXX Active Reno can be used on virtually all surfaces, provided that they are stable. Tiles that have lost their appeal, uneven plaster or even a grit wash finish – all surface unevenness up to 2 mm is concealed.

Minor preparatory work may be required for optimum results, depending on the quality of the substrate. On this page you can see a selection of the most common problems that can be resolved and the substrates that can be quickly renovated with **SYSTEXX Active Reno**.



Cracks: remove loose material, prime and apply the fabric.



Surface unevenness (up to 2 mm): simply apply the fabric.



Old wall coverings: remove loose sections, prime and apply the fabric.



OSB: apply barrier primer, and then apply the fabric.



Textured plaster (up to 2 mm): simply apply the fabric.



Grit wash finish (up to 2 mm): prime and apply the fabric.



Old glass fabric: simply apply the fabric.



Roughcast (up to 2 mm): simply apply the fabric.

PRACTICAL AND STYLISH

SYSTEXX Active Reno is not only incredibly quick and easy to apply; it can also form the basis for creating exciting and individual interior styles. Walls can be painted in understated white to blend subtly into the background, or incorporated into a color scheme to give the room a unique ambience. Individual walls can be transformed using exciting paint effects and creative techniques to make a special feature in the room.



NCS S 5502-R

NCS S 2040-Y40R

NCS S 2502-Y

NCS S 8010-R70B



HOW LONG DOES IT TAKE?

THE RENO RANGE AT A GLANCE

SYSTEXX Active Reno is designed for renovating walls with minimum effort, which means that noise and dust generation is also minimized during renovation work.

SYSTEXX Active Reno is available in three variants to suit all requirements:

- | **SYSTEXX Active Reno 938**: renovation glass fabric for conventional application with dispersion adhesive.
- | **SYSTEXX Active Reno S38**: glass fabric with Aqua Technology; the adhesive is already applied evenly to the back of the fabric and is activated by water with the Aqua Quick device. It takes approximately 1 minute to activate the adhesive, or approx. 3 minutes when applying to ceilings.
- | **SYSTEXX Active Reno SP38**: also features effective Aqua Technology, but is pre-pigmented with high quality white pigments. So pale colors need only one coat of paint – and that's it!



SYSTEXX Active Reno 938



SYSTEXX Active Reno S38



SYSTEXX Active Reno SP38



LET'S GET A MOVE ON

That's what Alexandra and Julian wanted to do; they had been looking for a new home with more space and a large garden for themselves and their four-legged family member. When the opportunity arose to buy a semi-detached house dating from the 1970s in their ideal location, they grabbed it without further ado.

Although the previous owner – an elderly single lady – had maintained the house in perfect condition, the style of her floor coverings, ceilings and wall coverings did not match the taste and expectations of the new owners. There was a lot of work to be done: out with the old and in with the new – the new owners wanted to move in as quickly as possible.

While they enthusiastically set about redesigning, refurbishing and decorating the living room and



The charming 70s stairwell

bedrooms right down to the smallest detail, the stairway simply had to be given a contemporary look that would allow it to serve its purpose as quickly as possible. There was no way that the previous owner's textured wallpaper could stay – they both agreed on that.



Various options were discussed for the new finish: a smooth skim coat of plaster, a textured plaster or a new wall covering. Whatever they chose, the wallpaper had to go. After removing the first few strips, it was clear that the wall beneath was starting to show its age. Various small cracks, poorly filled old drill holes, plaster crumbling a little here and there.

The idea of a quick and simple renovation seemed to be receding into the distance. The two came across the SYSTEXX Active Reno range while searching for other options.



SYSTEXX Active Reno SP38



The plaster behind the wallpaper was already showing signs of age.

Under their own steam and with professional help from a friend who is a master painter and decorator, they finally got down to the job in hand: with the old wallpaper stripped off and the larger defects roughly filled, the substrate preparation was complete.

The filled-in doorway to the living room didn't need a perfectly smooth finish, so that also saved time. „Finally, we could see the light at the end of the



It was enough to roughly fill the worst areas.

They quickly chose the SYSTEXX Active Reno SP38, because as well as concealing surface unevenness, it is also pre-pigmented and so would only need one coat of paint to achieve the white finish they wanted.

After removing and disposing of the old wallpaper, the couple decided on the spur of the moment to block up a superfluous door to the living room. This would create additional space for the television and furniture. Having dismantled the metal frame, they sealed the opening in the wall.



tunnel again”, says new homeowner Alexandra as she sums up her feelings when the

They began to apply the Reno SP38 using an Aqua Quick pasting machine.

Although it is not particularly easy to decorate a stairwell with its high walls and many nooks and crannies around the steps, they made rapid progress.



Homeowner Julian removing the old doorframe

substrate preparations were completed in a day, „then work resumed at a much faster pace than we had anticipated“.



Cracks are simply papered over.

„It's really handy that the back of the wall covering is pre-glued“,

says a delighted Julian, “we just had to draw the sheets through the water, leave them for a short time to activate the adhesive, and then hang them straight on the wall. Since you loosely fold the sheets as soon as you have drawn them through the water bath, you only need a small workbench so we didn't have to set up a cumbersome pasting table.”

“As soon as the wall covering was applied, and even before it had been painted, the stairwell completely changed the atmosphere when you came into the house”, remembers Alexandra. When the wall covering was dry, thanks to the pre-pigmentation, a single coat of white paint was all that was needed to complete this successful project. “We didn't expect to finish the stairwell so quickly”, she told us delightedly.

The Vitruvan Team wishes the new homeowners every happiness in their new home!

The results are impressive!



Thanks to its pre-pigmentation, one coat is sufficient for light-colored paint.

HIGH-QUALITY NATURAL RAW MATERIALS

ENVIRONMENTAL QUALITY

Molten glass is transformed into super-fine glass fibers – the base material for glass fabric and glass fleece. Thanks to the use of natural, high-quality raw materials, SYSTEXX wall and ceiling coverings are environmentally friendly and non-hazardous to health.

AT A GLANCE

TECHNICAL HIGHLIGHTS



Wall reinforcing and
crack bridging



Abrasion and
scrub-resistant



Impact and
perforation-resistant



Resistant to
disinfectants and
cleaning agents*



Non-toxic
and food-safe



Suitable for
allergy sufferers



Water vapor
permeable



Made in Germany



Reaction-to-fire:
B-s1, d0 – extremely
flame-retardant



| Classe d'émission: A+

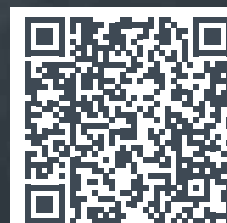
| CE label

| Roll: 1 x 25 m

*in combination with the corresponding
coating systems

DETAILED INFORMATION

www.systexx.com



The Vitrulan Group includes the three in Germany based companies Vitrulan Textile Glass, V4heat and Vitrulan Technical Textiles as well as Vitrulan Composites in Mikkeli / Finland.

Wall coverings manufactured from glass fabrics, modern infrared surface heating based on glass fabrics and technical textiles and composites made of glass, synthetic and carbon fibers are the core products of the Vitrulan Group.

Vitrulan Textile Glass produces extremely robust, hard-wearing, sustainable and versatile wall coverings. Additionally to a wide range of classical and modern designs, the company's focus is on the continuous development, production and sale of wall coverings with innovative additional functions. Sustainability in interior design and premium product quality are hallmarks of Vitrulan Textile Glass.

OUR SERVICE

- | We will be happy to assist you personally
- | Please contact us if you would like to receive further information on SYSTEXX
- | For free original samples and texts for bids, please go to www.systexx.com



systexx@vitrulan.com | www.systexx.com
SYSTEXX by Vitrulan is a brand of Vitrulan Textile Glass GmbH

Vitrulan Textile Glass GmbH | Bernecker Str. 8 | 95509 Marktschorgast | Germany
T +49 (0) 9227 77 0 | F +49 (0) 9227 77 700 | www.vitrulan.com
A company of the Vitrulan Group

Data protection notice: www.vitrulan.com/en/obligations-to-provide-information